

Box Two-Factor Authentication (2FA)

logintc.com/docs/connectors/adfs-box

Overview

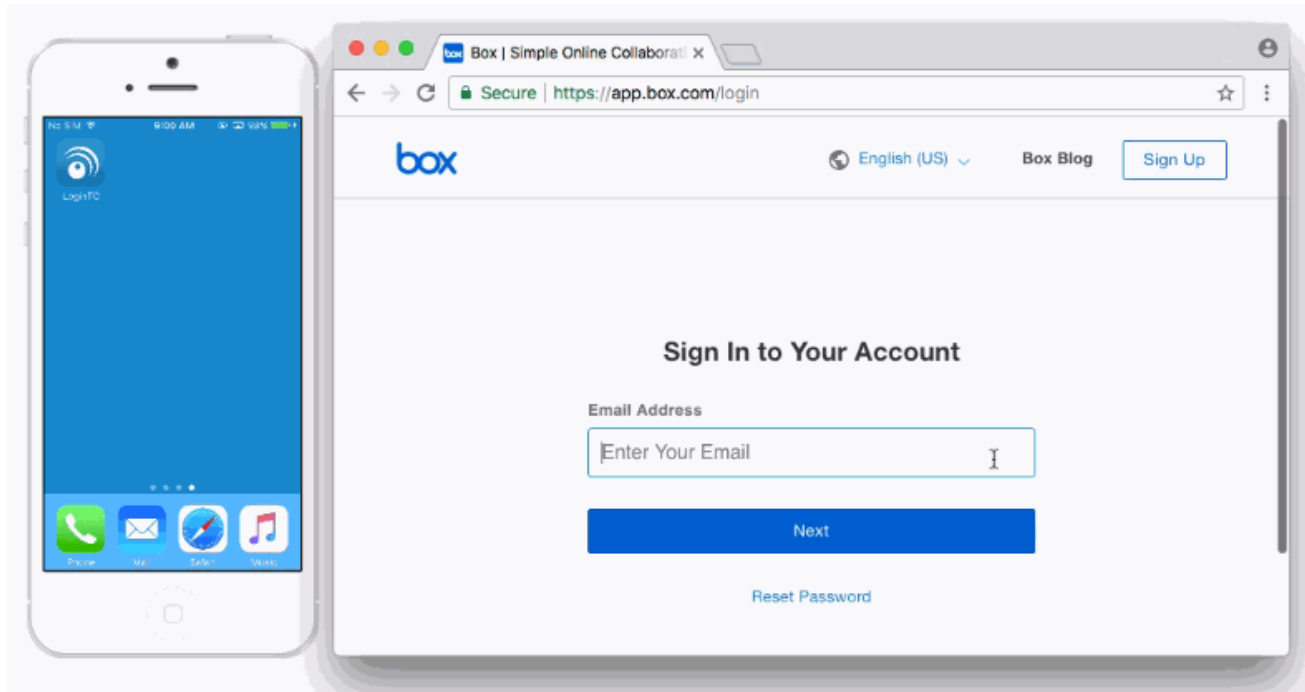
The LoginTC AD FS Connector protects access to your Microsoft Active Directory Federation Services (AD FS) by adding a second factor LoginTC challenge to existing username and password authentication. The LoginTC AD FS Connector provides a LoginTC multi-factor authentication (MFA) method to your AD FS deployment, used by your Box Business or Enterprise account.

Subscription Requirement

Your organization requires the **Business** or **Enterprise** plan to use the LoginTC AD FS Connector. See the [Pricing](#) page for more information about subscription options.

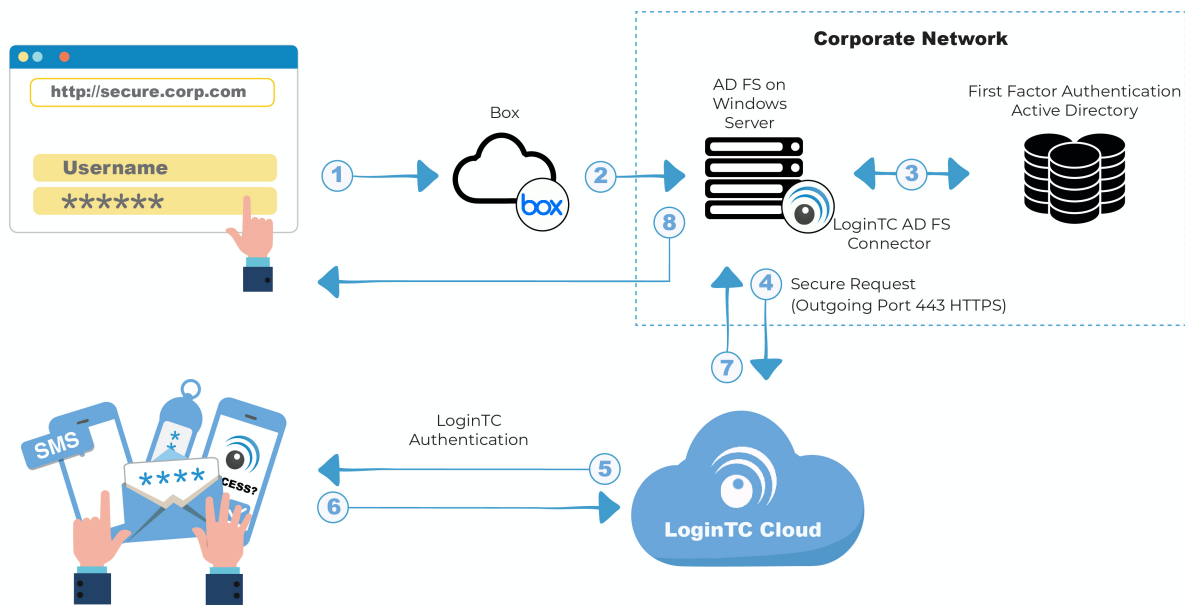
User Experience

After entering the username and password into the AD FS login page, the user is shown a selection of second factor options. The user clicks a button to receive a LoginTC push notification, authenticates and is logged in.



- [LoginTC Push](#)
- [OTP](#)

Architecture



Authentication Flow

1. A user attempts access to Box with username / password
2. A SAML request is made to AD FS
3. The username / password is verified against an existing first factor directory (i.e. Active Directory)
4. The request is trapped by LoginTC AD FS Connector and an authentication request is made to LoginTC Cloud Services
5. Secure push notification request sent to the user's mobile or desktop device
6. User response (approval or denial of request) sent to LoginTC Cloud Services
7. The LoginTC AD FS Connector validates the user response
8. User is granted access to Box

Prerequisites

Before proceeding, please ensure you have the following:

- Box configured with federation to your on-premises AD FS
- [LoginTC Admin Panel](#) account
- Active Directory Federation Services (AD FS) Host, Microsoft Windows Server 2016 (or Windows Server 2012)

Working Box Federation Deployment

It is strongly recommended that you have a working Box account with federation against your on-premises AD FS prior to adding LoginTC multi-factor authentication. Please see the

guide, [Setting Up Single Sign On \(SSO\) for your Enterprise](#), to configure your box to use your on-premises AD FS.

Create Application

Start by creating a LoginTC Application for your deployment. An Application represents a service (e.g. An application is a service (e.g., VPN or web application) that you want to protect. e) that you want to protect with LoginTC.

Create a LoginTC Application in [LoginTC Admin Panel](#), follow [Create Application Steps](#).

If you have already created a LoginTC Application for your deployment, then you may skip this section and proceed to [Installation](#).

Normalize Usernames

Usernames in ADFS are typically in the form “CORP\john.doe”, while in the LoginTC Admin Panel it is generally more convenient to simply use “john.doe”.

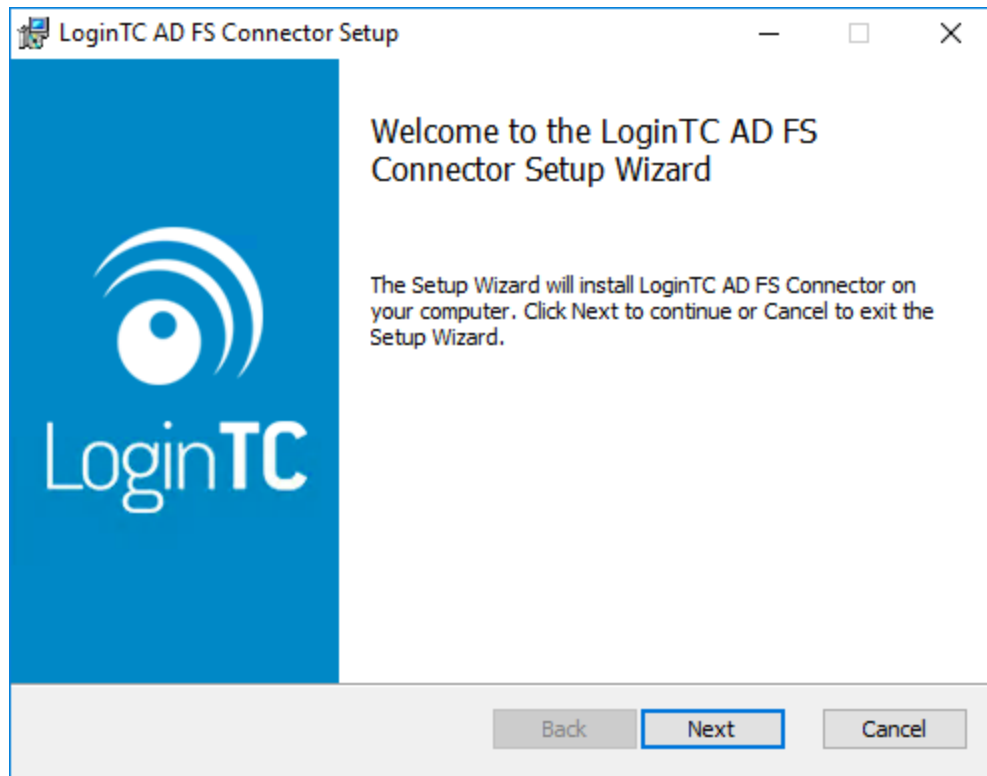
Configure **Normalize Usernames** from the Domain settings by navigating to **Domains > Your Domain > Settings**.

Select **Yes**, **Normalize Usernames** scroll down and click **Update**.

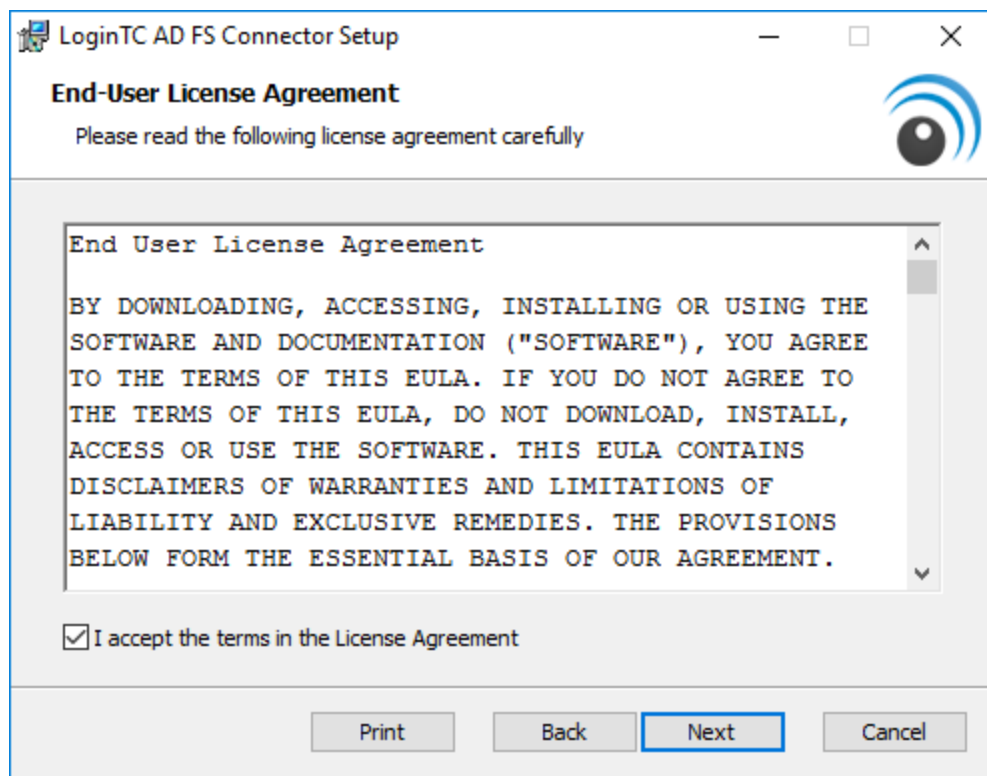
Installation

1. Download the latest version of the [LoginTC AD FS Connector](#)
2. Run the installer file as a privileged administrator user on the Windows Server with the AD FS role. Also ensure that the AD FS service is running prior to installing.

3. Press **Next**



4. Read the License Agreement and press **Next** if you accept the terms.



5. Change the **LoginTC API Host** only if you have a private enterprise LoginTC deployment. Press **Next**:

Configuration: LoginTC

Configuration: LoginTC

Configure how the connector communicates with LoginTC

LoginTC API Host:

cloud.logintc.com

The fully qualified domain name (FQDN) of the LoginTC API host. Change this only if you have a private LoginTC enterprise deployment. The default public LoginTC API host is cloud.logintc.com.

Back Next Cancel

6. Enter your LoginTC **Application ID** and **Application API Key**. These values are found on your LoginTC Admin Panel. Press **Next**

Configuration: LoginTC

Configuration: LoginTC

Configure how the connector communicates with LoginTC

Application ID:

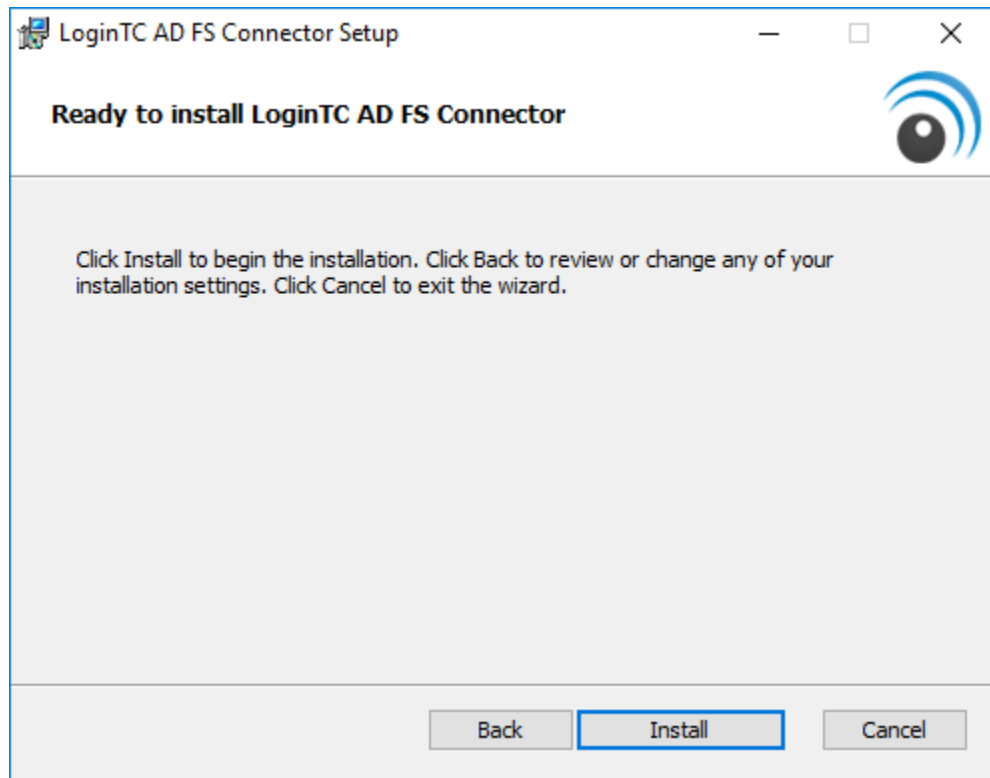
The 40-character hexadecimal LoginTC application identifier.

Application API Key:

The 64-character alphanumeric LoginTC application API key.

Back Next Cancel

7. Press **Install**. Note that the AD FS service will be restarted during installation and may be temporarily unavailable to your users.



AD FS Configuration

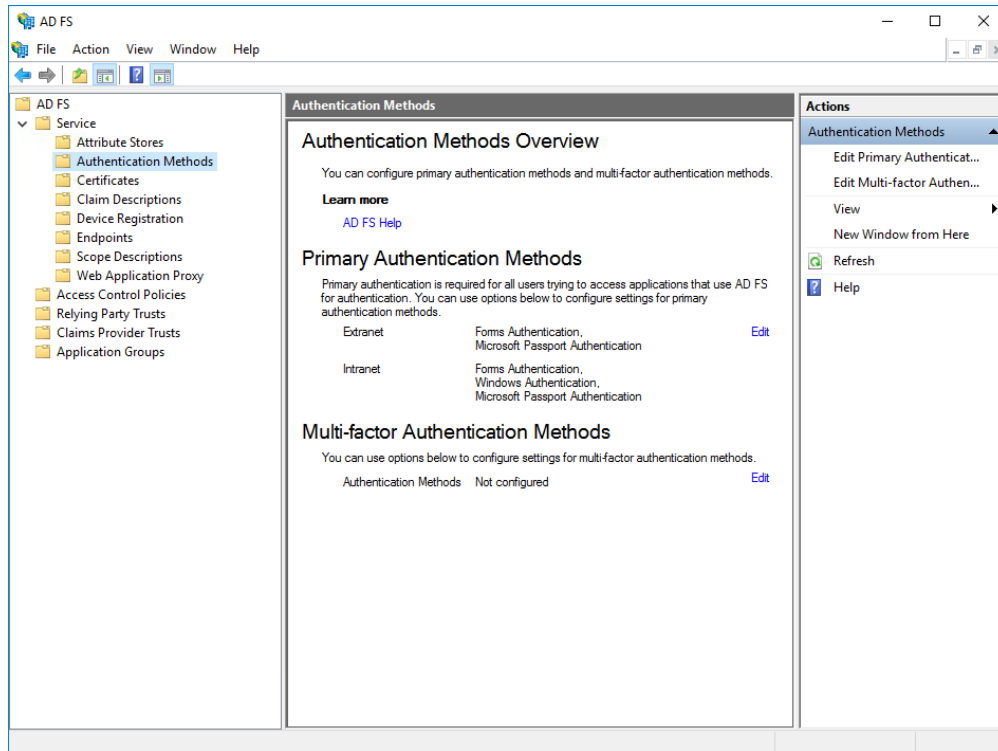
Windows Server 2016 (AD FS version 4.0)

The instructions below are for AD FS (version 4.0) running on Windows Server 2016. If you have AD FS (3.0) running on Windows Server 2012 R2, see [AD FS Configuration in Two-factor authentication for AD FS on Windows Server 2012 R2](#).

To configure your AD FS to use the LoginTC MFA method:

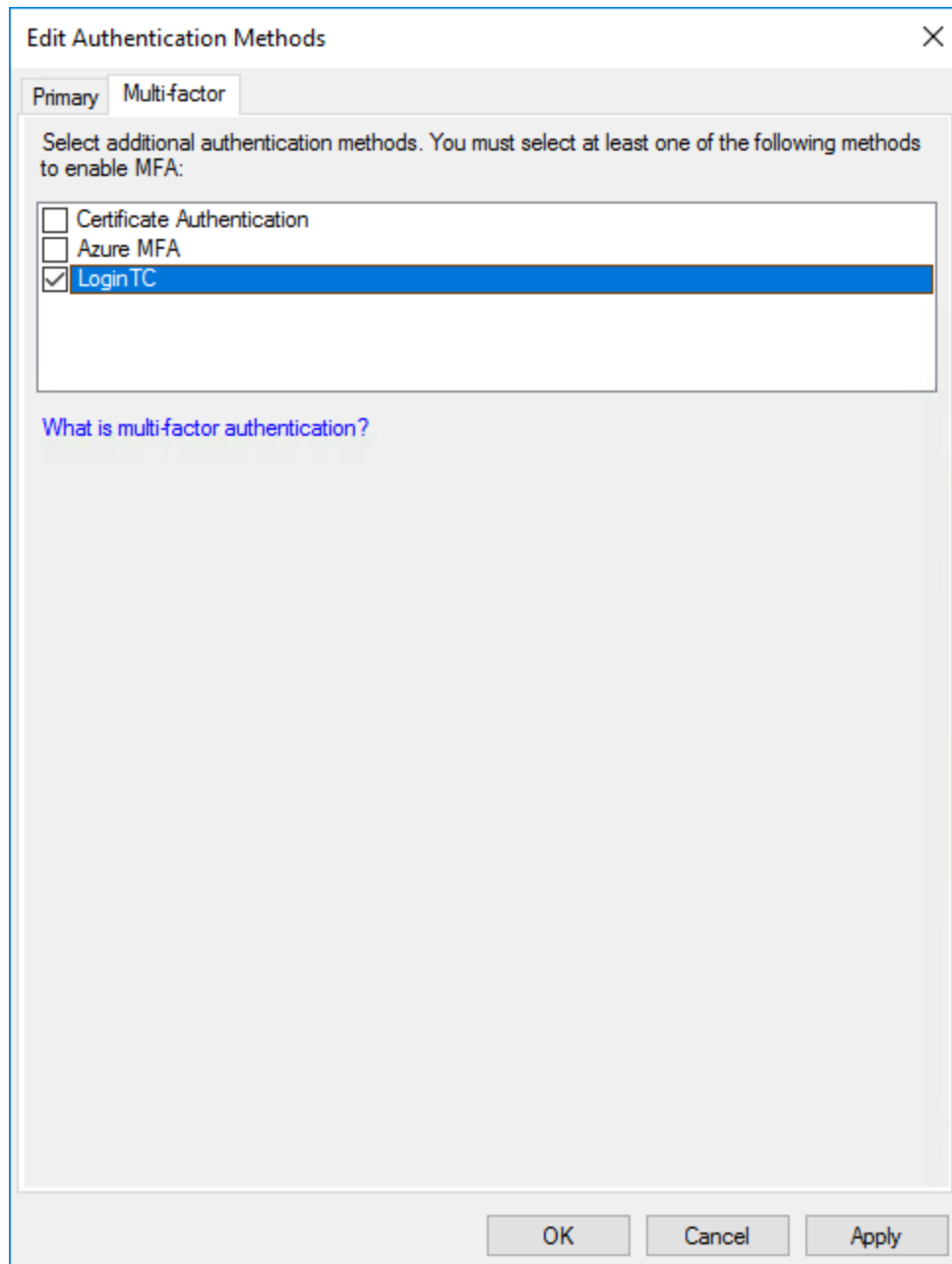
1. Open the **AD FS Management** console.

2. Click on the **Services > Authentication Policies** directory in the left side menu.



3. Click on **Edit Global Multi-factor Authentication...**

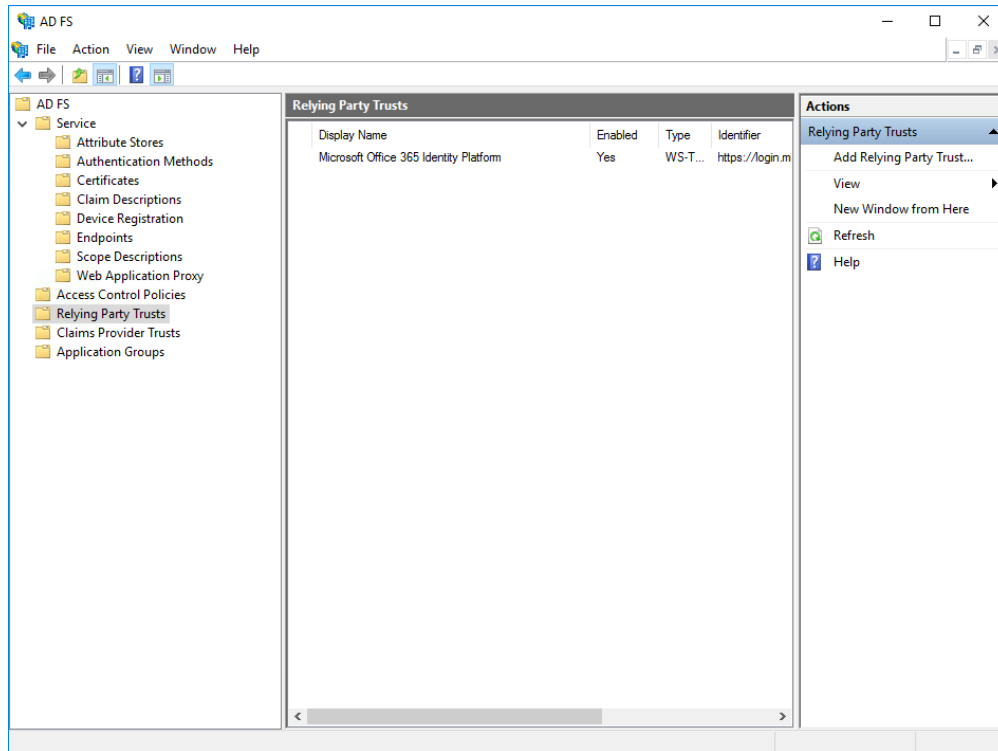
4. Check **LoginTC** in the list of MFA methods.



5. Click on **Relying Party Trusts** in the left side menu

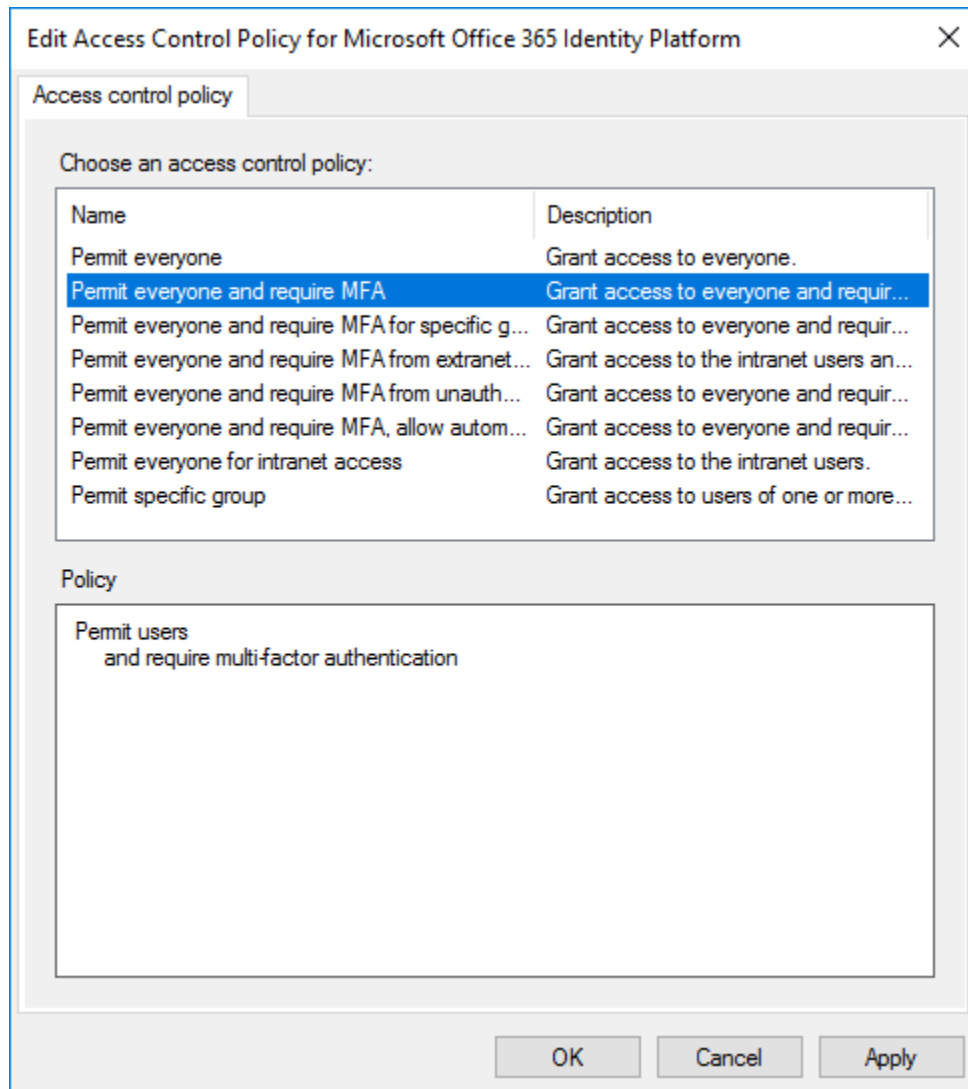
6. Select the Relying Party you wish to add LoginTC MFA to

7. Click on **Edit Access Control Policy...** under Actions in the right sidebar



8. Select an access control policy that uses MFA (e.g. **Permit everyone and require MFA**)

9. Press **Apply** and **OK**



Windows Server 2019

If you are installing the LoginTC AD FS Connector on Windows Server 2019 you are required to run the following PowerShell command to allow the AD FS login page to embed the LoginTC authentication options:

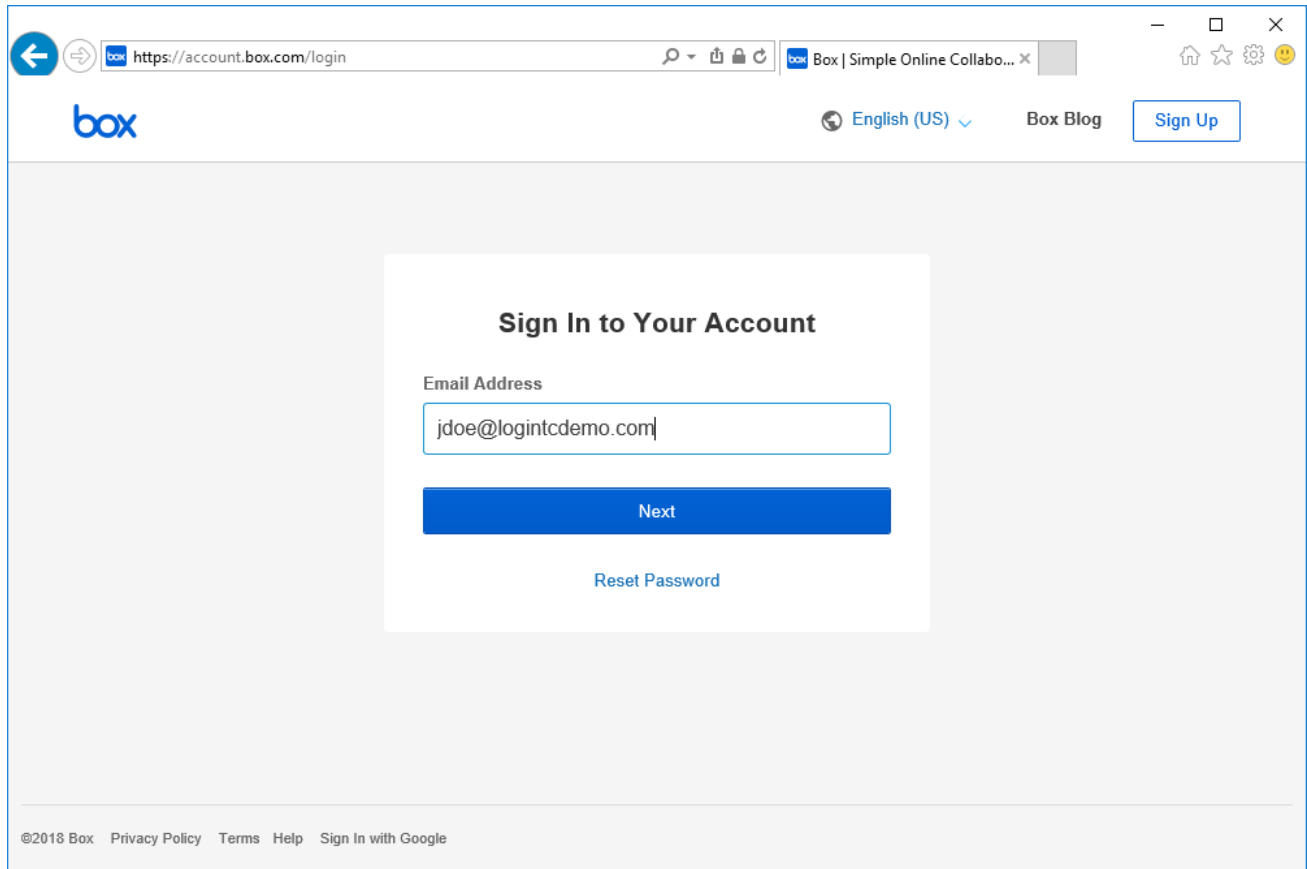
```
Set-AdfsResponseHeaders -SetHeaderName "Content-Security-Policy" -SetHeaderValue "frame-src 'self' https://cloud.logintc.com"
```

Your AD FS login will now present the user with a secondary LoginTC authentication page.

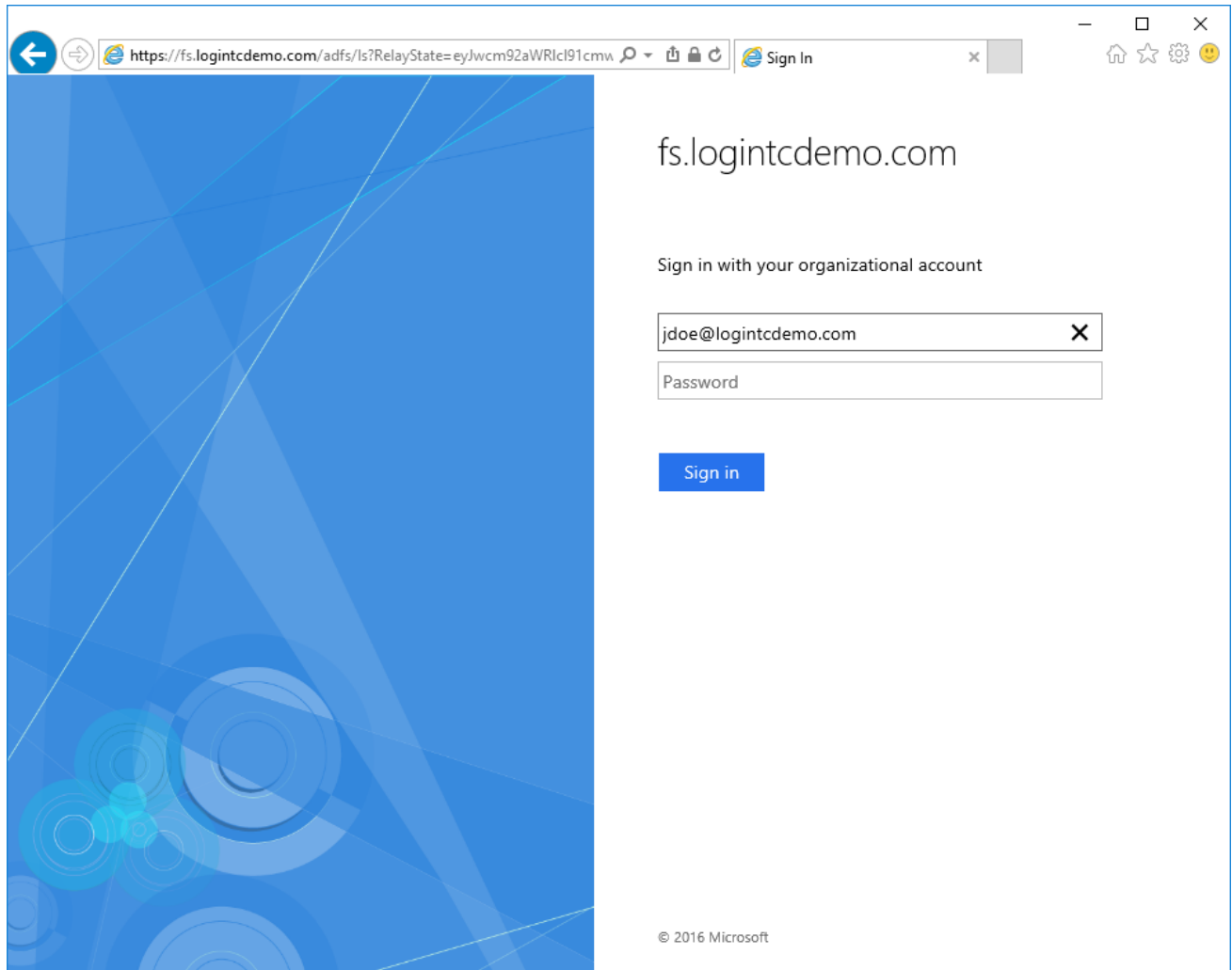
Usage

User Usage

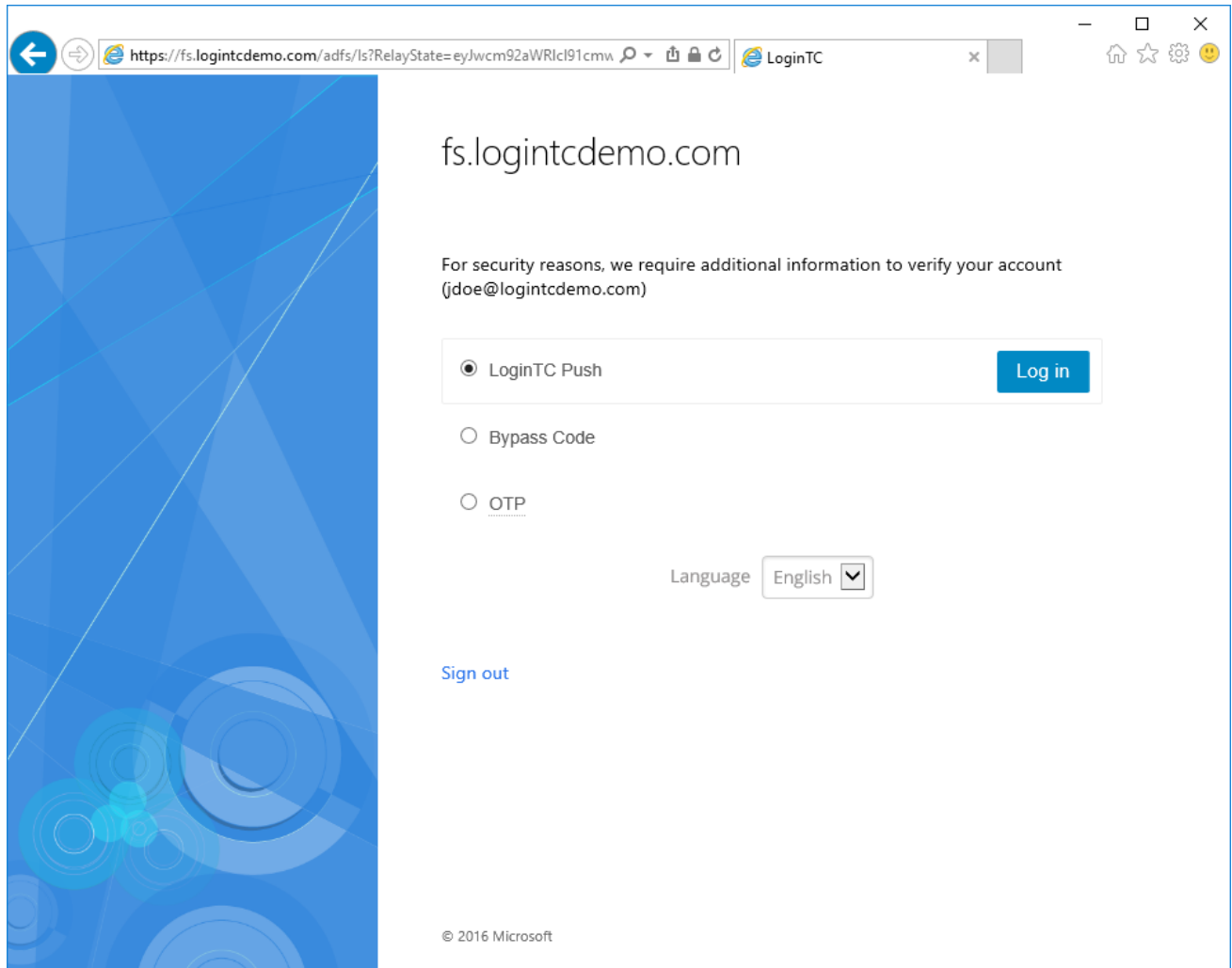
The user proceeds to the Box sign in page as they normally would where they enter their username.



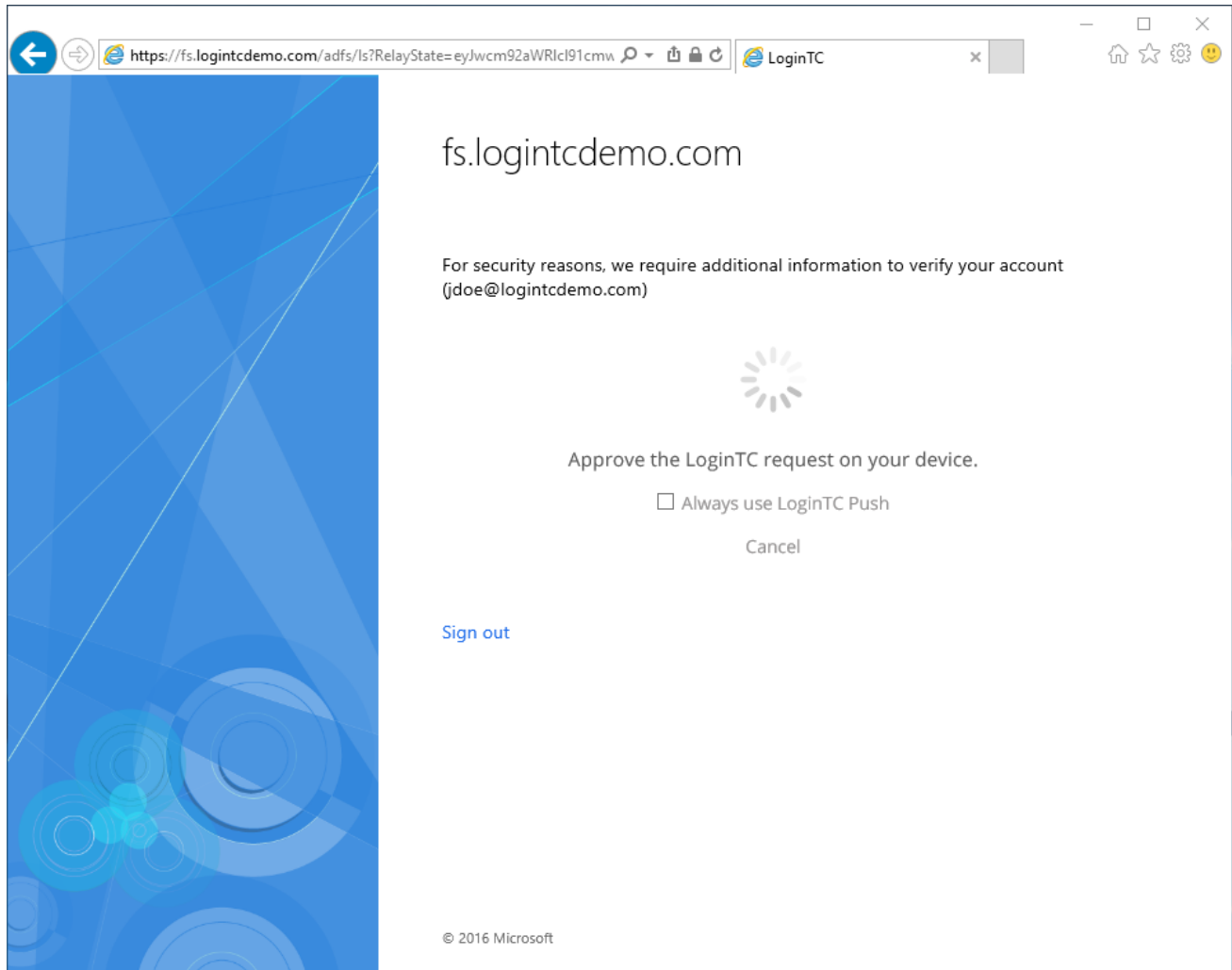
The user is brought to your on-premises AD FS where they are prompted to enter their username and password.



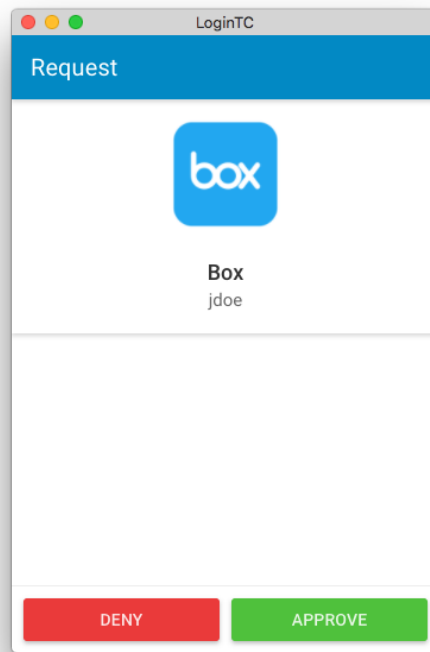
After successfully authenticating with their username and password, the user is presented with options to log in with LoginTC. The user may select to authenticate using LoginTC push, bypass codes, or OTPs.



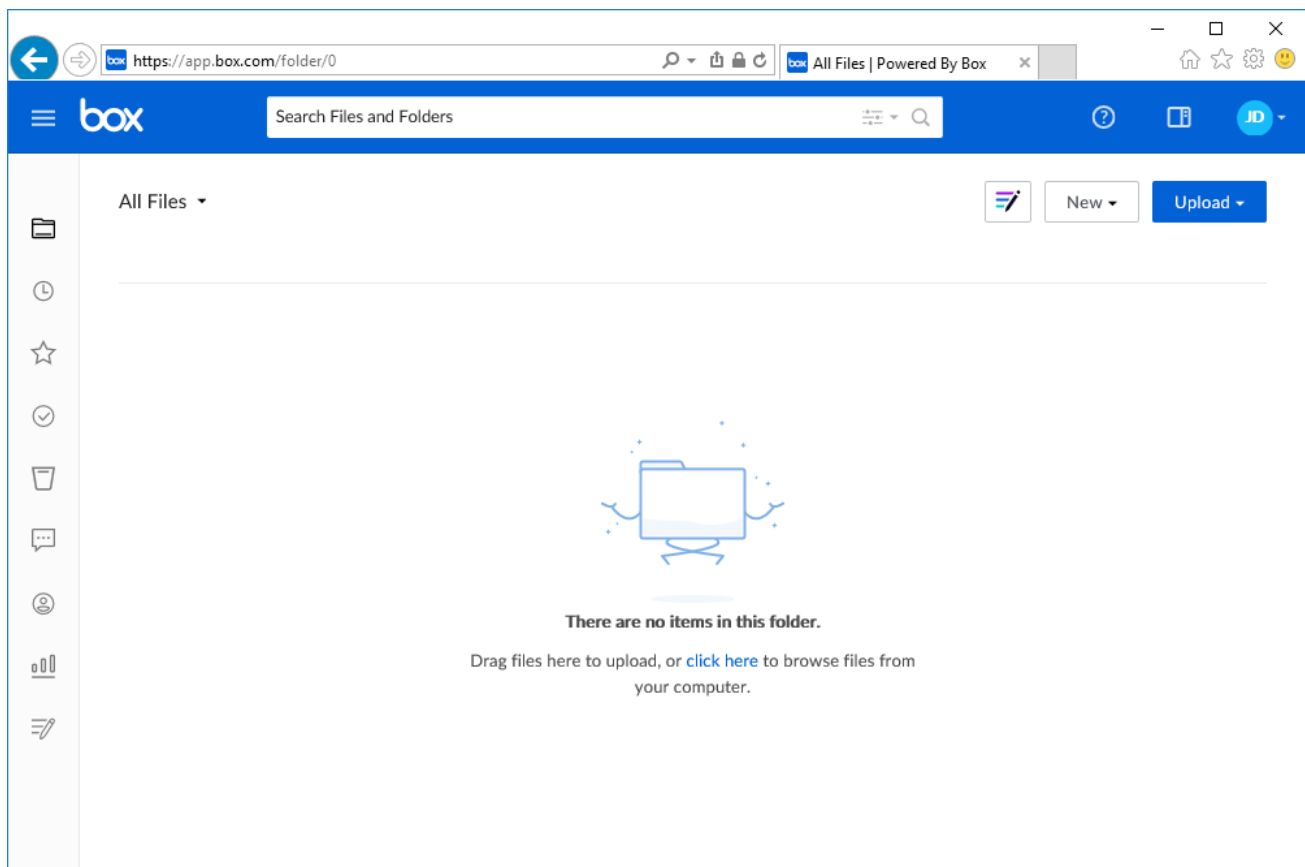
If the user selects LoginTC push, they are informed to approve the LoginTC request on their device. The user is also presented with an option to remember their LoginTC login choice. The next time the user logs in they will automatically receive a LoginTC push notification. The user may also cancel the login attempt and return to the login page.



The user receives a push notification on their device where they have provisioned their LoginTC token.

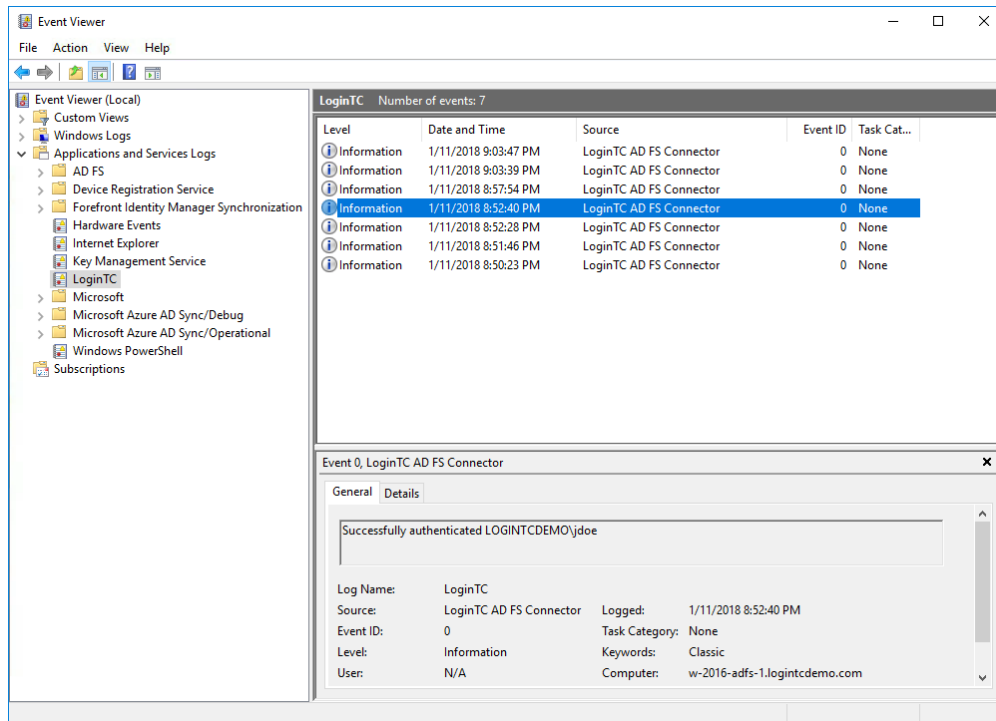


After successfully authenticating with LoginTC, the user is redirected back to Box.



Logging

The LoginTC AD FS Connector logs events to the Microsoft Event Viewer under **Applications and Service Logs** → **LoginTC**. In some cases, it may be helpful to also look at the general AD FS logs under **Custom Views** → **ServerRoles** → **Active Directory Federation Services**.



Uninstallation

To uninstall the LoginTC AD FS Connector, simply navigate to the **Add or remove programs** in the Windows **Control Panel**, find LoginTC AD FS Connector in the list and follow the prompts.

Prior to Uninstalling

Prior to uninstalling the LoginTC AD FS Connector, ensure that the LoginTC MFA method is not being used in any of your AD FS authentication policies. The uninstallation will fail if the LoginTC MFA method is being used in any of your AD FS authentication policies.

Troubleshooting

Email Support

For any additional help please email support@cyphercor.com. Expect a speedy reply.